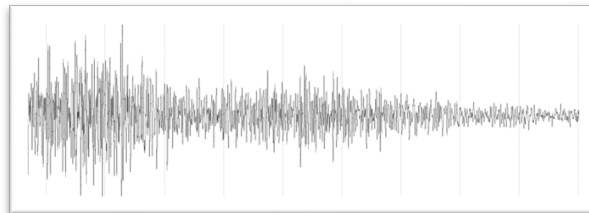

Post sismique

Cahier terrain

S. Roussel juin 2021



L'équipe SisMob est joignable aux coordonnées suivantes :

coralie.aubert@univ-grenoble-alpes.fr 04.76.63.51.14 / 06.14.83.07.05

sandrine.roussel@univ-grenoble-alpes.fr 04.76.63.51.80 / 06.02.11.18.34

isterre-sismob-tech@univ-grenoble-alpes.fr

Les responsables scientifiques sont joignables aux coordonnées suivantes :

emeline.maufroy@univ-grenoble-alpes.fr 04.76.63.51.79

olivier.coutant@univ-grenoble-alpes.fr 04.76.63.52.53

Post Sismique

Date		Time		SITE	
Operator		Centaur S/N		Sensor A s/n	Sensor B s/n

1. Time SCREEN	
Status	
GPS Satellites	
Comments	

2. Media SCREEN	
Archive card	time left :
Store card	time left :
Comments	

3. Sensor SCREEN A	
Mass position W (voie V)	
Mass position V (voie N)	
Mass position U (voie E)	
Comments	

3. Sensor SCREEN B	
Mass position W (voie V)	
Mass position V (voie N)	
Mass position U (voie E)	
Comments	

4. System SCREEN	
Up time	
Supply voltage 1	
Supply voltage 2	
Comments	

5. FLASH DISK SWAP
Do Maintenance/shutdown
Open the media door
Check the color of the media status led
If LED is green, remove the CF card
Insert the new CF card
Close the door and restart the Centaur

<p>Comments :</p> <p>s/n modem</p> <p>s/n panneau solaire</p>
--

Post Sismique

Date		Time		SITE	
Operator		Centaur S/N		Sensor A s/n	Sensor B s/n

1. Time SCREEN	
Status	
GPS Satellites	
Comments	

2. Media SCREEN	
Archive card	<i>time left :</i>
Store card	<i>time left :</i>
Comments	

3. Sensor SCREEN A	
Mass position W (voie V)	
Mass position V (voie N)	
Mass position U (voie E)	
Comments	

3. Sensor SCREEN B	
Mass position W (voie V)	
Mass position V (voie N)	
Mass position U (voie E)	
Comments	

4. System SCREEN	
Up time	
Supply voltage 1	
Supply voltage 2	
Comments	

5. FLASH DISK SWAP
Do Maintenance/shutdown
Open the media door
Check the color of the media status led
If LED is green, remove the CF card
Insert the new CF card
Close the door and restart the Centaur

<p>Comments :</p> <p>s/n modem</p> <p>s/n panneau solaire</p>
--

Post Sismique

Date		Time		SITE	
Operator		Centaur S/N		Sensor A s/n	Sensor B s/n

1. Time SCREEN	
Status	
GPS Satellites	
Comments	

2. Media SCREEN	
Archive card	time left :
Store card	time left :
Comments	

3. Sensor SCREEN A	
Mass position W (voie V)	
Mass position V (voie N)	
Mass position U (voie E)	
Comments	

3. Sensor SCREEN B	
Mass position W (voie V)	
Mass position V (voie N)	
Mass position U (voie E)	
Comments	

4. System SCREEN	
Up time	
Supply voltage 1	
Supply voltage 2	
Comments	

5. FLASH DISK SWAP
Do Maintenance/shutdown
Open the media door
Check the color of the media status led
If LED is green, remove the CF card
Insert the new CF card
Close the door and restart the Centaur

<p>Comments :</p> <p>s/n modem</p> <p>s/n panneau solaire</p>
--

Post Sismique

Date		Time		SITE	
Operator		Centaur S/N		Sensor A s/n	Sensor B s/n

1. Time SCREEN	
Status	
GPS Satellites	
Comments	

2. Media SCREEN	
Archive card	time left :
Store card	time left :
Comments	

3. Sensor SCREEN A	
Mass position W (voie V)	
Mass position V (voie N)	
Mass position U (voie E)	
Comments	

3. Sensor SCREEN B	
Mass position W (voie V)	
Mass position V (voie N)	
Mass position U (voie E)	
Comments	

4. System SCREEN	
Up time	
Supply voltage 1	
Supply voltage 2	
Comments	

5. FLASH DISK SWAP
Do Maintenance/shutdown
Open the media door
Check the color of the media status led
If LED is green, remove the CF card
Insert the new CF card
Close the door and restart the Centaur

<p>Comments :</p> <p>s/n modem</p> <p>s/n panneau solaire</p>
--

Post Sismique

Date		Time		SITE	
Operator		Centaur S/N		Sensor A s/n	Sensor B s/n

1. Time SCREEN	
Status	
GPS Satellites	
Comments	

2. Media SCREEN	
Archive card	time left :
Store card	time left :
Comments	

3. Sensor SCREEN A	
Mass position W (voie V)	
Mass position V (voie N)	
Mass position U (voie E)	
Comments	

3. Sensor SCREEN B	
Mass position W (voie V)	
Mass position V (voie N)	
Mass position U (voie E)	
Comments	

4. System SCREEN	
Up time	
Supply voltage 1	
Supply voltage 2	
Comments	

5. FLASH DISK SWAP
Do Maintenance/shutdown
Open the media door
Check the color of the media status led
If LED is green, remove the CF card
Insert the new CF card
Close the door and restart the Centaur

<p>Comments :</p> <p>s/n modem</p> <p>s/n panneau solaire</p>
--